

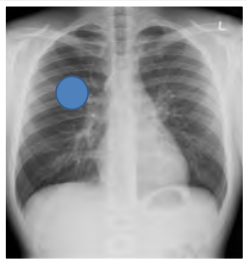


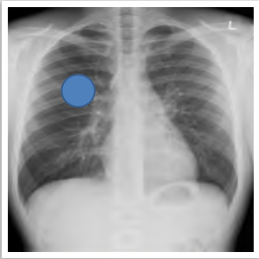
Localization of disease in the thorax

Probability method

What will I gain from this video?

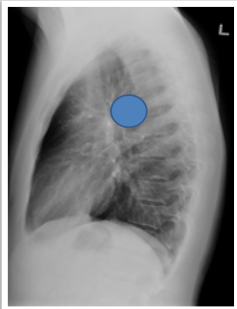
After watching this video, you will be able to use the probability method to help with localization of disease in the thorax.

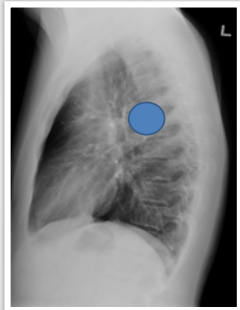




POSSIBILITIES

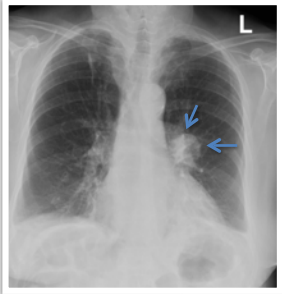
- Anterior chest wall
- Anterior pleura
- Lung
- Posterior pleura
- Posterior chest wall





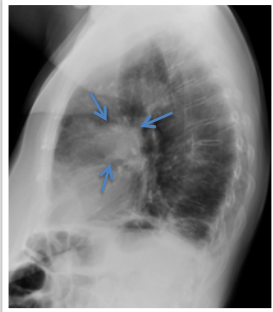
POSSIBILITIES

- Anterior chest wall
- Anterior pleura
- Lung
- Posterior pleura
- Posterior chest wall



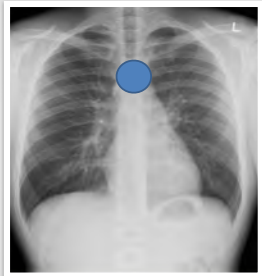
POSSIBILITIES

- Anterior chest wall
- Anterior pleura
- Lung
- Left hilum
- Posterior pleura
- Posterior chest wall



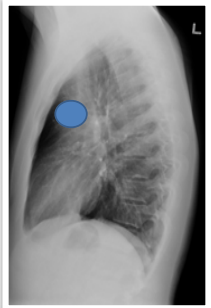
POSSIBILITIES

- Anterior chest wall
- Anterior pleura
- Lung
- Left hilum
- Posterior pleura
- Posterior chest wall



POSSIBILITIES

- Anterior chest wall
- Mediastinum
- Posterior chest wall



POSSIBILITIES

- Anterior chest wall
- Mediastinum
- Posterior chest wall

Localization of pathology from a single X-ray may be difficult.
In many situations, two views are required to narrow possibilities.
